



North Carolina

DEPARTMENT OF TRANSPORTATION

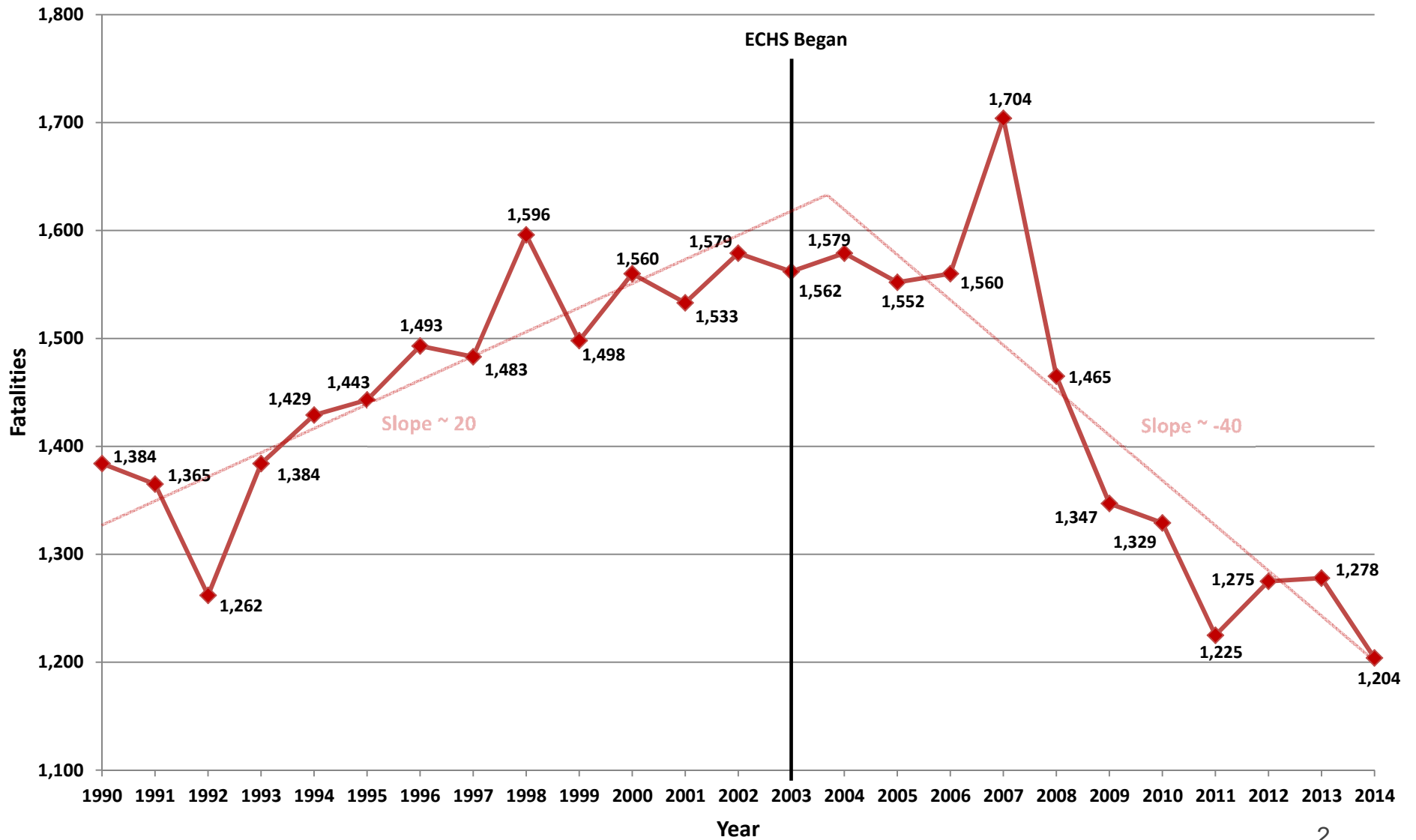
Fatal and Serious Injury Trend Update

Terry Hopkins
Chris Oliver

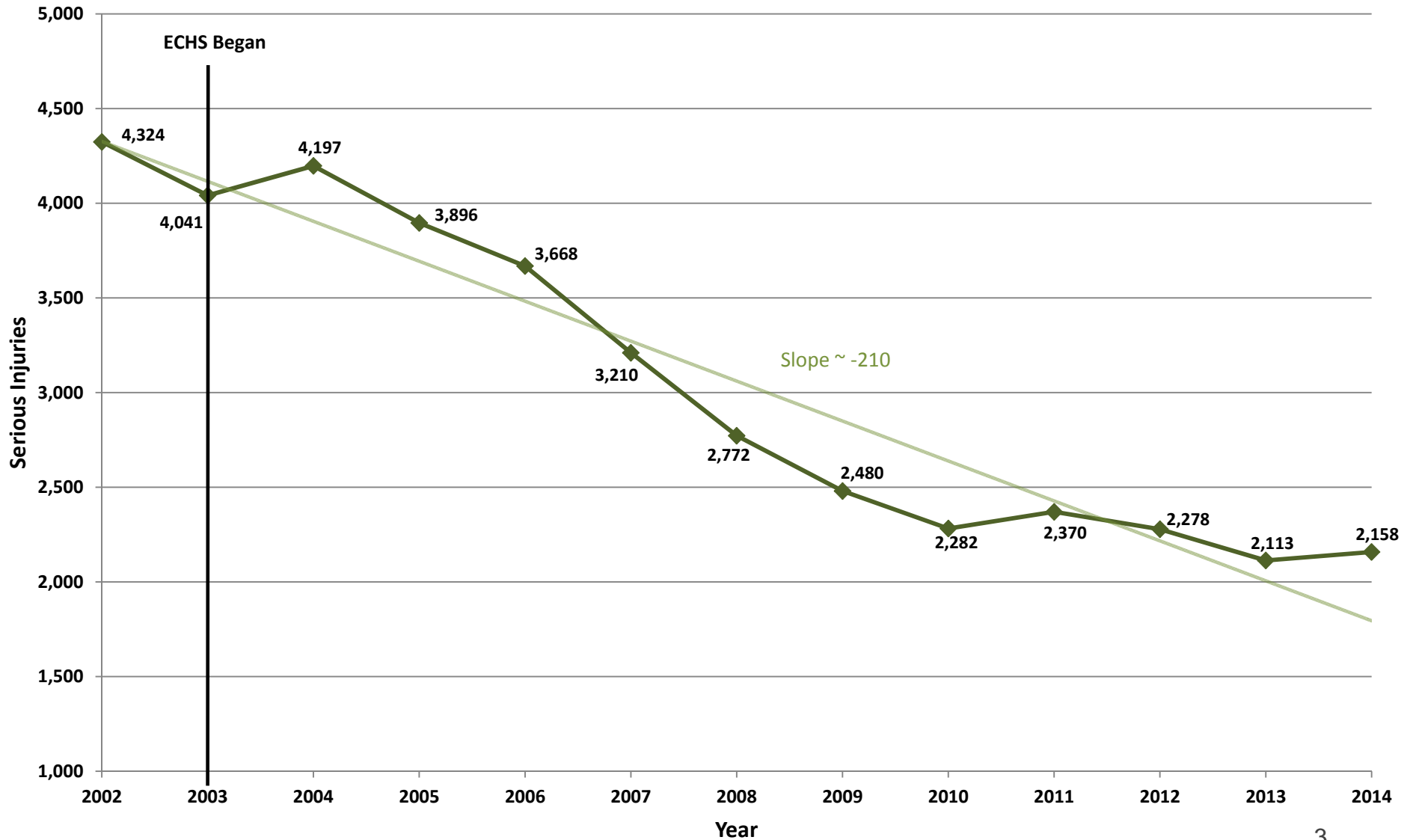
January 9, 2015



North Carolina Fatalities Trends Since 1990



North Carolina Serious Injuries (A Type Injury - Disabling) Trends Since 2002



Fatal Table

Last Update Date: 1/5/2015
End Date for Crash Data: 12/31/2014

Category	Fatal Crashes 2014 YTD	Fatalities 2014 YTD	Fatal Crashes 2013 YTD	Fatalities 2013 YTD	Fatal Crashes 5 Year Average	Fatalities 5 Year Average	Year to Date Difference	Year to Date % Change
Total Reported Crashes	1,114	1,203	1,172	1,276	1,193	1,288	-58	-4.9%
Alcohol	300	319	344	377	382	414	-44	-12.8%
Bicyclist	11	11	19	20	20	20	-8	-42.1%
Intersection Related	203	220	237	256	231	245	-34	-14.3%
Lane Departure	599	662	618	691	608	668	-19	-3.1%
Motorcycle	135	139	147	150	150	155	-12	-8.2%
Pedestrian	145	146	159	162	156	158	-14	-8.8%
Rear End	80	86	52	59	54	60	28	53.8%
Sideswipe	14	16	11	11	16	17	3	27.3%
Speeding	304	342	280	325	320	357	24	8.6%
Struck Pole	52	58	59	69	59	64	-7	-11.9%
Struck Tree	269	289	234	264	241	266	35	15.0%
Unbelted	492	532	512	545	527	557	-20	-3.9%
Work Zone	20	23	13	13	14	16	7	53.8%

Note:

The above chart was generated from reported fatal crash data contained in North Carolina's Crash Database as of the "last update date" shown at the top of this page. These statistics should be viewed as preliminary. For more detailed information, please contact Brian Murphy, PE at bgmurphy@ncdot.gov or 919-773-2895

- The Fatal Table is part of the Statewide Fatal Slip Report
- The Statewide Fatal Slip Report is updated and sent on Monday, Wednesday and Friday (via email distribution)
- The Fatal Table is updated weekly on Monday



Organizational Performance

Contact Us

Fatality Rate

Incident Duration

Infrastructure Health

Delivery Rate

Employee Engagement

Mission & Goals

Values

Transportation Reform

Reports

Executive Measures PDF

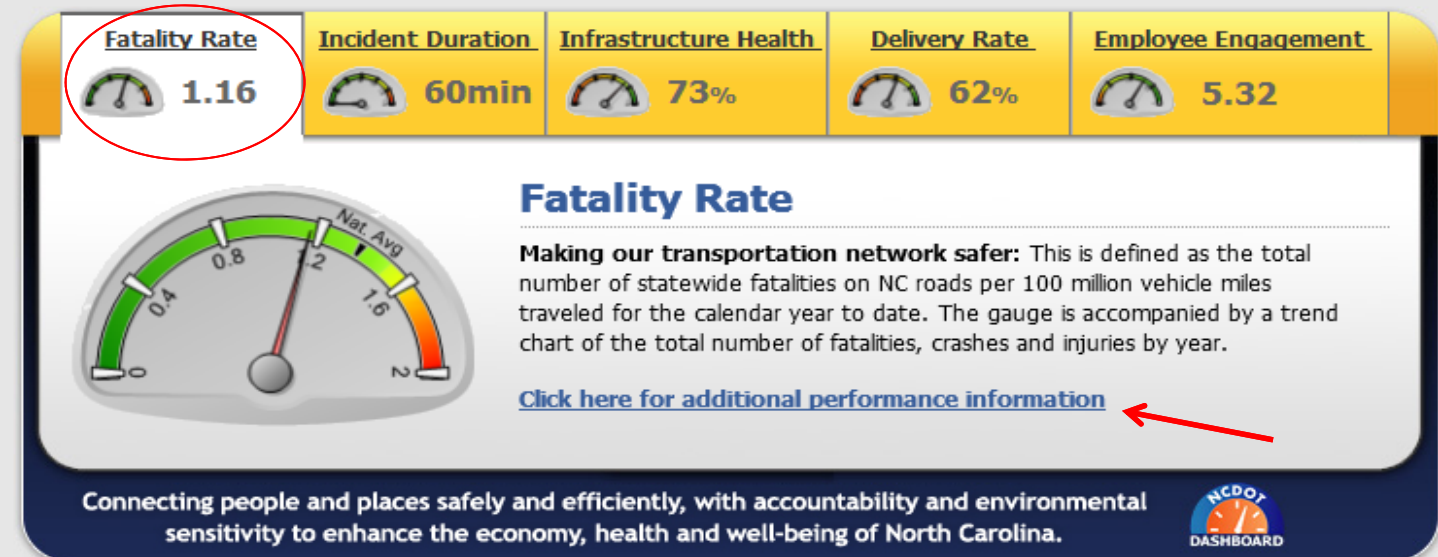
Dashboard Guide PDF

Home » Organizational Performance

Organizational Performance

The N.C. Department of Transportation is committed to measuring and improving performance. The department's Organizational Performance Dashboard serves as an indicator of how well we are meeting our mission and goals. Check this page often for updates and real-time information.

Simply roll over a dial to see additional performance data for each goal.



Home » Organizational Performance » Fatality Rate

Fatality Rate

Making our transportation network safer: This is defined as the total number of statewide fatalities on NC roads per 100 million vehicle miles traveled for the calendar year to date. The gauge is accompanied by a trend chart of the total number of fatalities, crashes and injuries by year.

Filter these results by county:

Statewide

Crashes



Statewide:
Total Crashes as of 11/30/2014:
228267

Yearly Statistics

Data current as of: 11/30/2014

Year	Crashes	Fatalities	Injuries	VMT (100MVM) ¹	Crash Rate	Fatality Rate	Injury Rate
2000	231647	1561	141169	892.46	259.56	1.75	150.68
2001	225607	1533	134074	915.71	246.37	1.67	146.42
2002	234478	1577	133317	936.86	250.28	1.68	142.3
2003	248564	1561	134533	937.63	265.1	1.66	143.48
2004	249155	1578	133035	956.27	260.55	1.65	139.12
2005	233980	1552	124114	1008.61	231.98	1.54	123.05
2006	235922	1560	120366	1016.48	232.1	1.53	118.41
2007	241947	1702	120093	1035.98	233.54	1.64	115.92
2008	235348	1466	112574	1014.63	231.95	1.44	110.95
2009	231837	1347	109950	1025.9	225.98	1.31	107.17
2010	238466	1328	109459	1023.85	232.91	1.3	106.91
2011	234042	1226	107080	1037.38	225.61	1.18	103.22
2012	239792	1275	110464	1044.65	229.54	1.22	105.74
2013	247725	1278	108608	1051.44	235.61	1.22	103.29
2014	228267	1120	99669	963.48	236.92	1.16	103.45

¹ VMT=Vehicle Miles Traveled, MVM=Million Vehicle Miles.

* Total Year to Date